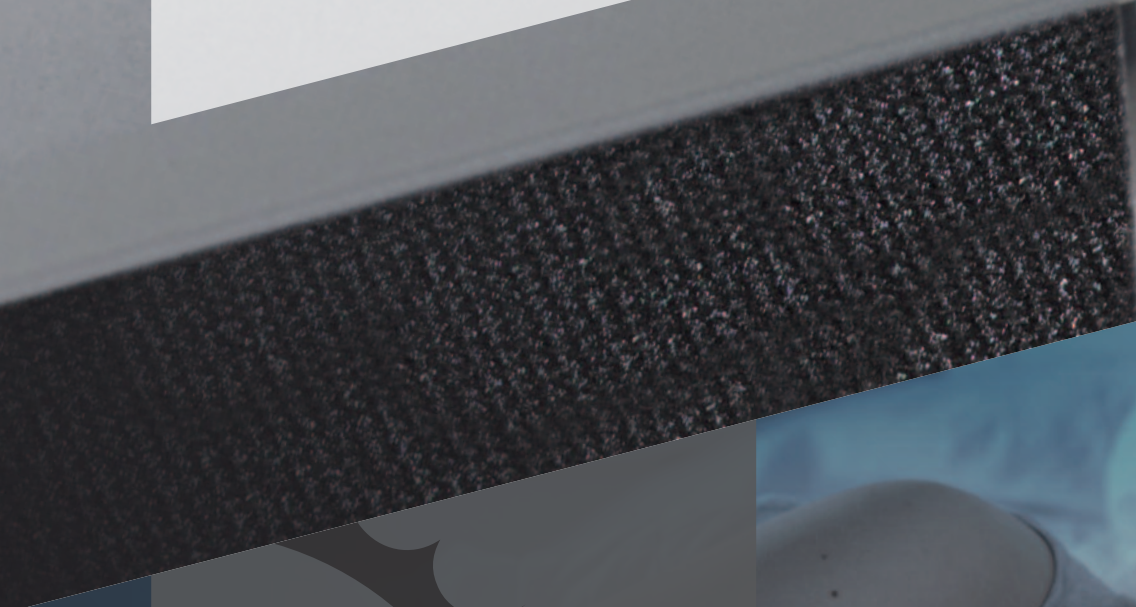


Kassettenrollo 5.01

... zeitlos und formschön.



GROUP
SOLARMATIC®
IHR SONDERBAU-EXPERTE

Kassettenrollo 5.01

Übersicht

max. Rollobreite: 220 cm

max. Rollohöhe: **300 cm**

Kunststoffteile: weiß, creme, braun, grau, anthrazit, schwarz

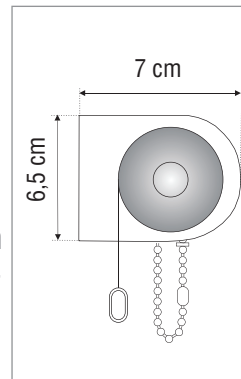
Seitenführung: Führungsschiene

Bedienung: Standard: Kettzug

optional: Mittelzug als Federzug mit Softraise-Funktion
(bis 200 cm Höhe), Batteriemotor, 230 V Funkmotor

Profilfarben: Standard: weiß

optional: weitere (gegen Mehrpreis)



DETAILS

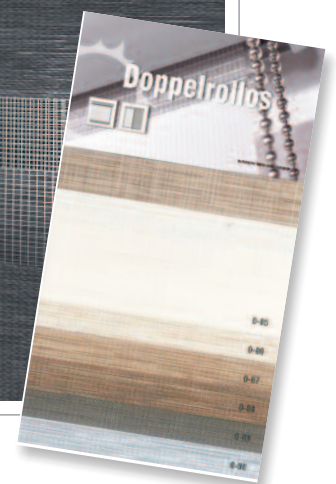


OPTIONEN



OPTIONEN

(gegen Mehrpreis)



UNIFARBEN - COLOR



0-01 hellgrau



0-02



0-03



0-04



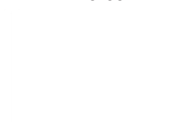
0-05



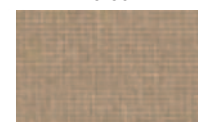
0-06



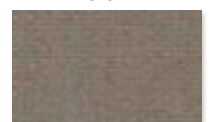
0-07



0-08



0-09



0-10



0-11



0-12



0-13



0-14



0-15



0-16



0-17



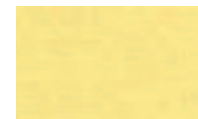
0-18



0-19



0-20



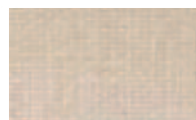
0-21



0-22



0-23



0-24



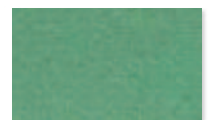
0-25



0-26



0-27



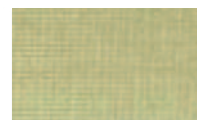
0-28



0-29



0-30



0-31



0-32



0-33



0-34



0-35



0-36



0-37



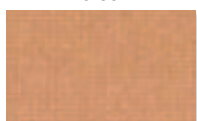
0-38



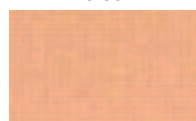
0-39



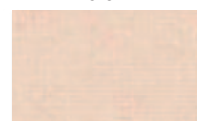
0-40



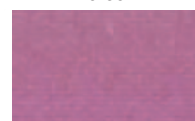
0-41



0-42



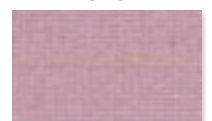
0-43



0-44



0-45



0-46

VERDUNKELUNG



Dark Duo 0-67



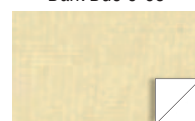
Dark Duo 0-68



Dark Duo 0-69



Dark Duo 1-03



Dark White 1-10



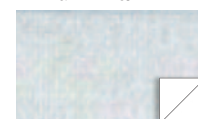
Dark White 1-11



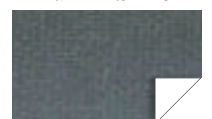
Dark White 1-13



Dark White 1-16



Dark White 1-17



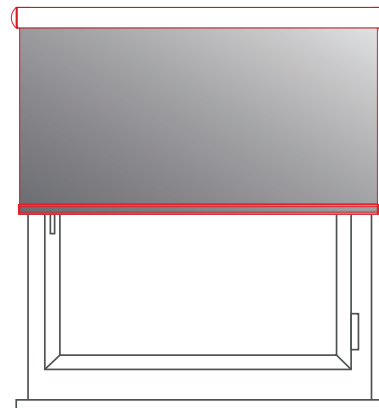
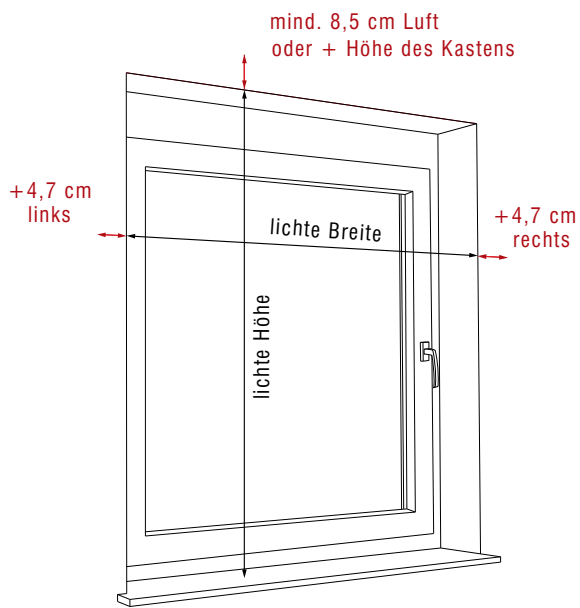
Dark White 1-15

auch als
Fotorollo

Kassettenrollo 5.01

Aufmaß

Wand- oder Rahmenmontage



Bestellhöhe =
lichte Höhe Fensternische + 8,5 cm

Bestellbreite =
lichte Breite Fensternische + 9,4 cm

SCHRAUBMONTAGE

