

Defekten Clip austauschen

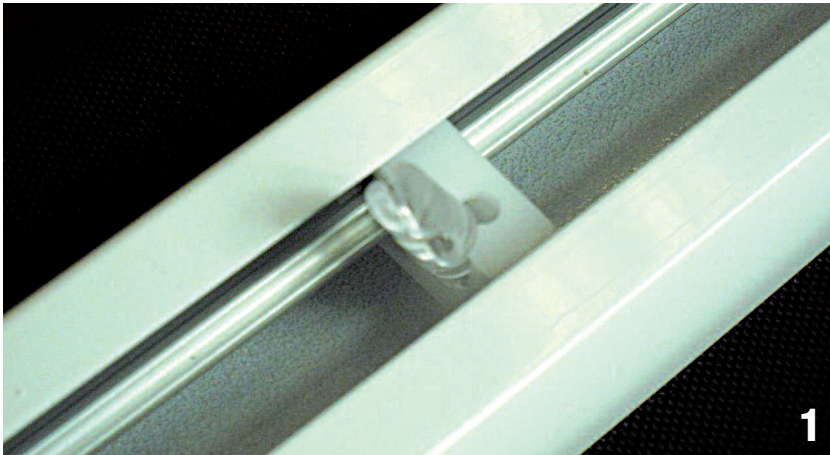


Abb. 1:
Den defekten Clip seitlich aus der Halterung klicken.

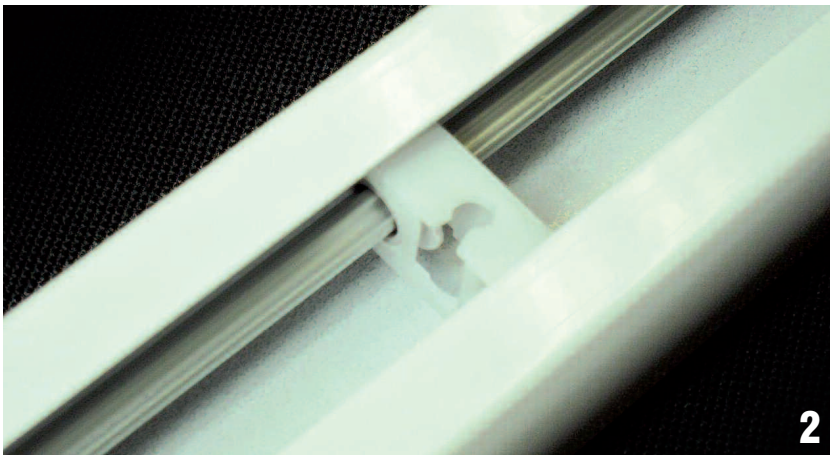


Abb. 2:
Halterung ohne Clip.

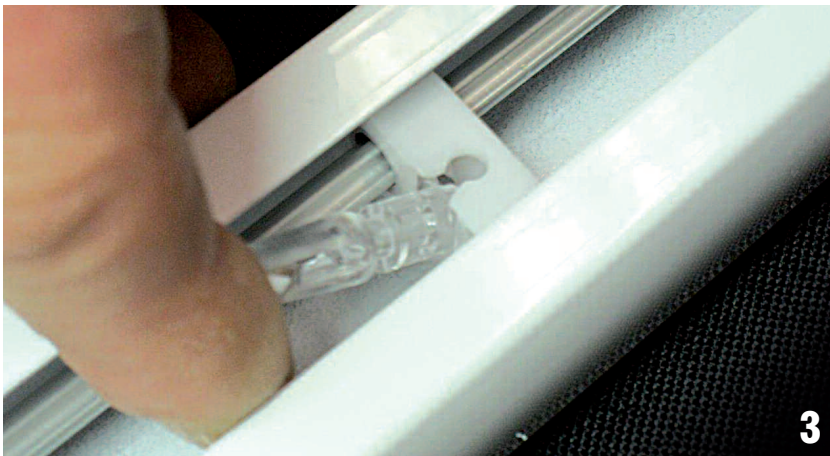


Abb. 3:
Neuen Clip schräg ansetzen, einklicken und...

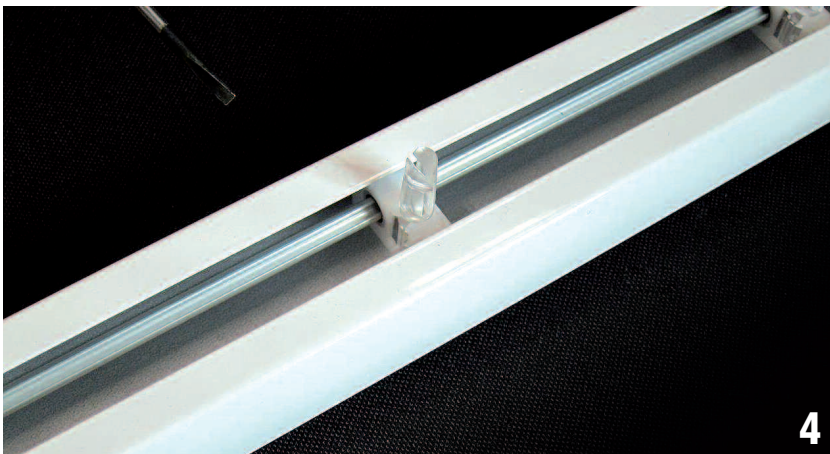


Abb. 4:
...mittels Bedienkette in den Laufwagen ausrichten.